

Mindful Parenting in a Rapidly Changing World: A Framework for Fostering Emotional Resilience in Children

Forough Babaei Pour¹

¹Department of Psychology, Khomeinishahr Branch, Islamic Azad University, Khomeinishahr/Isfahan, Iran

Corresponding Author: babaei.forough@yahoo.com

(Received: 25/04/2025)

Revised: 30/04/2025

Accepted: 20/12/2025)

KEYWORDS

Mindful Parenting

Emotional Resilience

Child Development

Mindfulness

Family Dynamics

Emotional Intelligence

ABSTRACT

In an era characterized by rapid technological, social, and cultural change, children are increasingly exposed to emotional stressors that challenge their psychological well-being. Mindful parenting has emerged as a promising approach that emphasizes present-moment awareness, emotional regulation, and compassionate parent–child interactions. This review aims to examine the core principles of mindful parenting and its role in fostering emotional resilience in children living in a rapidly changing world. Drawing on interdisciplinary research from developmental psychology, mindfulness-based interventions, and family studies, the article synthesizes theoretical frameworks and empirical findings related to emotional regulation, parental self-awareness, and adaptive coping in children. Practical mindfulness-based strategies for parents, including emotional coaching, intentional family rituals, and parental self-care, are discussed. Furthermore, potential barriers to implementing mindful parenting, such as parental stress, time constraints, and digital distractions, are examined, along with evidence-based solutions. All things considered, this review emphasizes mindful parenting as a viable and successful framework for fostering emotional intelligence, emotional resilience, and positive family dynamics in modern societies.

1. Introduction

In today's fast-paced, digitally driven, and increasingly interconnected society, the context of parenting has undergone profound transformation. Rapid technological advancement, widespread use of social media, academic competition, and shifting social norms have introduced new complexities into children's developmental environments. Parents are often required to balance multiple responsibilities while navigating constant information overload, which can limit emotional availability and responsiveness. These societal changes have significantly altered parent–child interactions and the emotional climate within families [1,2].

Children growing up in this rapidly changing world face unique emotional challenges, including excessive digital exposure, reduced opportunities for unstructured social interaction, heightened academic pressure, and social comparison through online platforms. Empirical evidence suggests that these conditions are associated with increased emotional dysregulation, anxiety, and stress-related symptoms in children. Without consistent emotional support, such stressors may negatively affect children's long-term psychological well-being and adaptive functioning [3–5].

Within this context, mindful parenting has emerged as a theoretically grounded and practically relevant approach to contemporary parenting challenges. Rooted in the

principles of mindfulness—intentional, present-moment, and non-judgmental awareness—mindful parenting emphasizes emotional attunement, self-regulation, and compassionate parent–child interactions. By fostering emotional safety, modeling adaptive coping strategies, and strengthening secure attachment, mindful parenting plays a critical role in promoting emotional resilience in children. The goal of this review is to look at the fundamentals of mindful parenting, investigate the psychological mechanisms that underlie it, and emphasize useful tactics for helping kids develop emotional resilience in a world that is changing quickly [6, 7]. Figure 1 shows how mindful parenting and parent-child interactions are dynamic and reciprocal.

Figure 1: The Cycle of Mindful Parenting and Parent–Child Interaction

2. The Foundations of Mindful Parenting

Mindful parenting is rooted in the ancient practice of mindfulness, which has its origins in Eastern contemplative traditions, particularly Buddhism. In recent decades, mindfulness has been adopted into Western psychological frameworks, largely due to the work of Jon Kabat-Zinn, who defines it as “paying attention in a particular way: on purpose, in the present moment, and nonjudgmentally” (Kabat-Zinn, 1994). This concept, when applied to parenting, becomes a powerful tool for enhancing the parent-child relationship by fostering greater awareness, empathy, and emotional attunement. At its core, mindful parenting comprises several key components that shape how parents interact with their children. The review identifies several core principles of mindful parenting. These include: (1) present-moment awareness, which involves full attention to the child during interactions; (2) non-reactivity, allowing parents to pause before responding to challenging behaviors; (3) emotional attunement, through which parents recognize and validate children’s

emotional experiences; (4) compassion for both the child and oneself, reducing harsh self-judgment and punitive parenting; and (5) intentional communication, emphasizing active listening and respectful dialogue. Together, these principles form the foundation of mindful parenting and guide parents toward more adaptive and supportive parent–child relationships. These include attentive listening, non-reactivity, emotional regulation, and compassion. Attentive listening involves giving children undivided attention during interactions, which helps them feel valued and understood. Non-reactivity refers to the ability of parents to pause and reflect before responding, rather than reacting impulsively out of frustration or anger [3]. Emotional regulation enables parents to manage their internal emotional states effectively, creating a stable environment that supports healthy emotional development in children. Compassion for both self and child plays a central role, encouraging a parenting style that is both nurturing and accepting, even in moments of difficulty. In practical terms, mindfulness translates into everyday parenting behaviors. A mindful parent may take a moment to breathe deeply before addressing a child’s misbehavior, seek to understand the child’s underlying emotional needs or implement daily rituals that promote connection and presence, such as shared meals or bedtime storytelling. These simple yet intentional acts can significantly enhance the quality of the parent-child relationship and model healthy emotional behaviors for children to emulate. Over time, such practices contribute to a more resilient, empathetic, and emotionally secure family dynamic, equipping children with the internal tools needed to navigate a rapidly changing world with confidence and balance [4]. From a theoretical perspective, mindful parenting operates through several interconnected psychological mechanisms. First, parental mindfulness enhances emotional regulation, allowing parents to respond to children’s behaviors with greater intentionality rather than impulsive reactivity. This regulated parental response reduces emotional escalation and creates a predictable emotional environment for the child. Second, mindful parenting strengthens secure attachment by increasing

parental sensitivity and responsiveness to children’s emotional cues. Secure attachment, in turn, has been consistently associated with greater emotional resilience, adaptive coping, and stress tolerance in children. Third, mindful parents serve as emotional role models; through observational learning, children internalize calm, reflective, and compassionate responses to stress. These mechanisms collectively explain how mindful parenting contributes to emotional resilience across developmental stages.

3. Emotional Resilience: Why It Matters

Emotional resilience refers to a child’s ability to adapt to stress, regulate emotions, and recover from adversity while maintaining psychological well-being. It is not a fixed trait but a dynamic developmental process influenced by caregiving relationships, environmental contexts, and learned coping strategies [5,11]. In the context of contemporary societal challenges—such as digital overstimulation, academic pressure, and social uncertainty—emotional resilience has become increasingly essential for healthy child development.

Research consistently demonstrates that emotionally resilient children exhibit stronger self-regulation, higher self-esteem, improved problem-solving skills, and more positive peer relationships. These developmental outcomes are strongly shaped by caregiving environments that provide emotional safety, validation, and consistent support [10,11]. Parents play a central role in this process by modeling emotional responses and guiding children through stressful experiences. These developmental pathways linking mindful parenting to emotional resilience are conceptually summarized in Figure 2.

Mindful parenting contributes to emotional resilience by fostering emotional awareness, adaptive coping, and secure attachment. Parents who regulate their own emotions effectively create predictable and emotionally supportive environments that help children internalize resilience-related skills. By responding with empathy rather than reactivity, mindful parents enable children to develop confidence in managing emotions and navigating uncertainty [1,6].

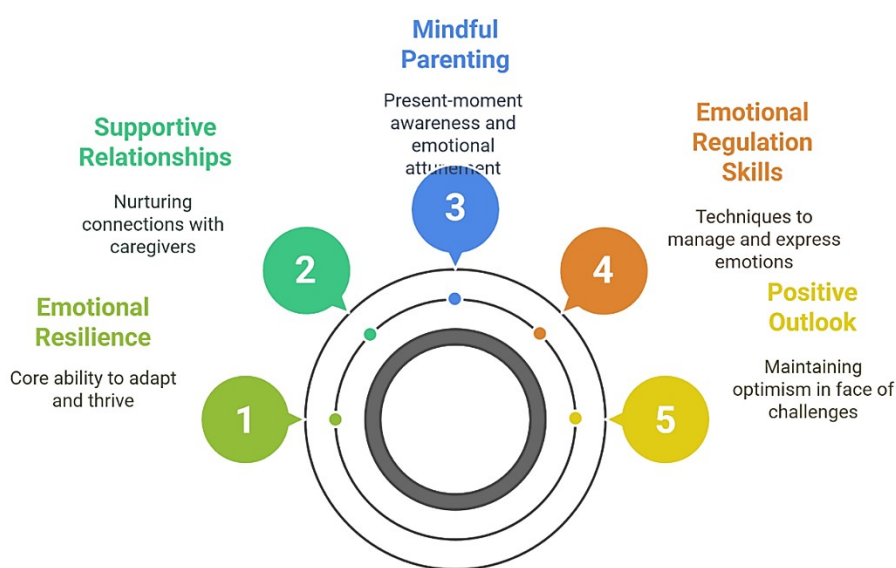


Figure 2: Pathways Through Which Mindful Parenting Fosters Emotional Resilience in Children

4. Practical Strategies for Cultivating Mindfulness in Parenting

4.1 Personal Mindfulness Practice for Parents

Mindful parenting begins with parental self-awareness. Regular mindfulness practices such as meditation, mindful breathing, and reflective journaling help parents observe their thoughts and emotions without judgment, thereby reducing emotional reactivity [12]. Parental self-care is a foundational component of mindful parenting, as chronic stress and burnout undermine emotional availability and responsiveness. By prioritizing self-care, parents strengthen their capacity to model emotional regulation and resilience for their children [13].

4.2 Creating Intentional Family Rituals

Incorporating mindfulness into daily family routines promotes emotional connection and stability. Practices such as mindful mealtimes, shared gratitude rituals, and technology-free family moments encourage presence and meaningful interaction. These intentional rituals foster emotional safety, reduce overstimulation, and reinforce consistent parent-child engagement [8,14].

4.3 Communication and Emotional Coaching

Mindful communication involves active listening, emotional validation, and reflective responding. Parents are encouraged to acknowledge children's emotions, help them accurately label feelings, and guide problem-solving without dismissal or overreaction. Emotional coaching enhances children's emotional literacy and supports the development of empathy, self-regulation, and resilience [9,15].

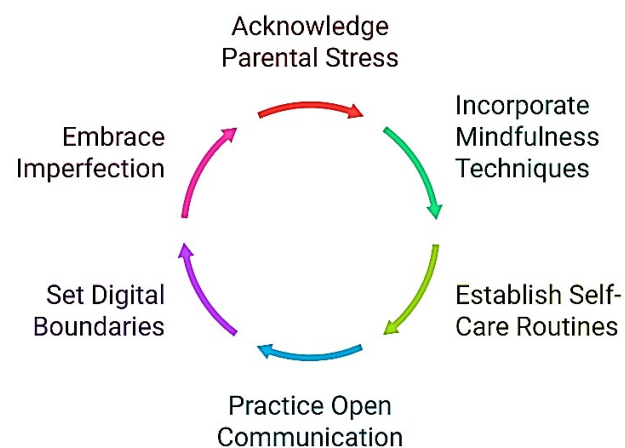
5. Case Studies and Expert Insights

Numerous families have reported transformative changes in their children's behavior and emotional well-being after

adopting mindful parenting practices. One such example comes from a family featured in a study by Kabat-Zinn (2003), where parents integrated daily mindfulness routines—such as mindful breathing and reflective listening—into their interactions with their children. Before adopting these practices, the family experienced high levels of conflict and stress, particularly after after-school hours. However, within a few months of practicing mindfulness, the family reported a noticeable improvement in communication, reduced conflict, and enhanced emotional regulation. The children, particularly those in the early adolescent years, showed greater empathy and a deeper understanding of their own emotions, as well as those of their parents. Expert opinions on mindful parenting emphasize how well it promotes emotional resilience. Figure 3 shows the fundamental elements and procedures that underpin mindful parenting.

Dr. John Duffy, a clinical psychologist and author of *The Available Parent*, emphasizes that mindful parenting helps children develop a "mental muscle" for emotional regulation, making them better equipped to cope with stress and adversity [10]. According to Dr. Duffy, mindfulness allows parents to respond to their children with intentionality rather than react impulsively, modeling emotional regulation for their children. Similarly, Dr. Daniel J. Siegel, a renowned child psychiatrist and author of *The Whole-Brain Child*, argues that mindful parenting nurtures the child's brain development by encouraging self-awareness and self-control, key components of emotional resilience. Measurable outcomes from adopting mindful parenting practices include improved academic performance, fewer behavioral issues, and stronger family bonds. Studies show that children raised in environments that prioritize mindfulness tend to exhibit better emotional regulation, higher levels of empathy, and reduced instances of anxiety and depression. These outcomes reflect the profound impact mindful parenting can have on both the immediate family dynamic and the long-term emotional health of children. By cultivating mindful practices, parents

are not only fostering resilience in their children but also creating an environment where emotional intelligence can



thrive [11].

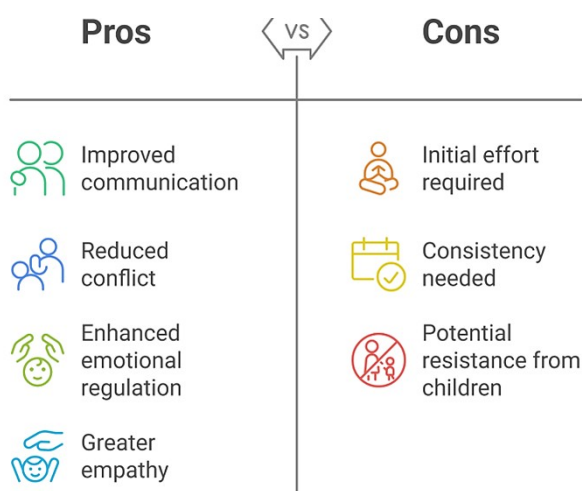


Figure 3: Core Components and Processes of Mindful Parenting

6. Overcoming Common Challenges

Parenting, even with the best intentions, is fraught with challenges, particularly when striving to implement mindful practices consistently. One of the most prevalent hurdles is parental stress, impatience, or burnout. In the fast-paced world we live in, parents often juggle numerous responsibilities—work, family, and social obligations—which can lead to mental and emotional exhaustion. When overwhelmed, it becomes difficult to maintain the calm presence that mindful parenting demands. However,

acknowledging these feelings as a natural part of the parenting journey is essential. Parents can incorporate mindfulness techniques, such as short breathing exercises or mindful pauses, to recalibrate their emotional state. Establishing personal self-care routines and setting boundaries for relaxation are also vital for preventing burnout and ensuring that parents can be emotionally available for their children [12]. Figure 4 shows the iterative cycle by which mindful parenting addresses these issues and promotes emotional regulation.

Figure 4: Iterative Cycle of Mindful Parenting and Emotional Regulation

Another common challenge arises from handling resistance from children or co-parents. Children, especially during moments of stress or transition, may reject mindful practices or test boundaries. Furthermore, differences in parenting styles or misunderstandings with a co-parent can cause conflict. In these situations, open and empathetic communication is key. Parents should model emotional regulation themselves and explain mindfulness practices in terms that resonate with their children’s developmental stage. Co-parents should work together to establish common goals for their parenting approach, with an understanding that flexibility and adaptability are essential components of mindful parenting. Navigating modern stressors, such as technology, academic pressure, and social media, further complicates mindful parenting [13]. The constant influx of digital information can detract from family time and interfere with the cultivation of emotional resilience. Parents can address these stressors by setting clear guidelines for screen time, encouraging tech-free activities, and fostering open discussions about the emotional impact of social media. Balancing academic expectations with emotional well-being requires a mindful

approach to goal-setting that considers the child's mental and emotional health. Lastly, parents must recognize that perfection is not the goal. Mindful parenting is about consistency and presence, not flawless execution. Parents should embrace the imperfection inherent in both themselves and their children, knowing that small, intentional efforts go a long way in fostering resilience. Practicing self-compassion and seeking support from mindfulness communities can help parents stay on course, despite the inevitable challenges [14-16]. A summary of common challenges in mindful parenting and corresponding practical strategies is presented in Table 1.

Table 1: Common Challenges in Mindful Parenting and Practical Strategies for Addressing Them

Challenge	Description	Suggested Strategies
Parental Stress & Burnout	Overwhelm from juggling multiple responsibilities	Mindful breathing, self-care routines, setting boundaries
Child or Co-parent Resistance	Children reject practices; co-parenting conflicts	Empathetic communication, emotional modeling, shared goals
Modern Stressors (Tech, Academics)	Distractions from technology, academic pressure, social media	Screen-time limits, tech-free activities, mindful goal-setting
Perfectionism in Parenting	Unrealistic expectations of being a perfect parent	Self-compassion, community support, embracing imperfection

7. Conclusion

In this article, we have explored the transformative power of mindful parenting in cultivating emotionally resilient children. By fostering practices rooted in mindfulness, parents can guide their children through the complexities of modern life with greater emotional stability, empathy, and self-awareness. The relationship between mindful parenting practices and their short- and long-term outcomes is summarized in Figure 5.

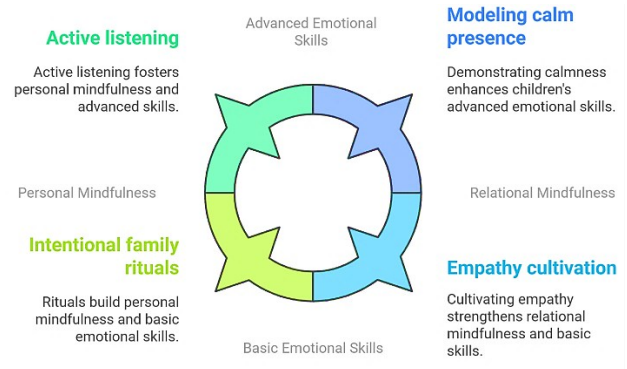


Figure 5: Mindful Parenting Practices and Their Short- and Long-Term Outcomes

Important discoveries emphasize the value of mindfulness as a relational and personal practice, where a mindful parent not only builds their own emotional resilience but also offers a solid, caring basis for their child's development. A significant opportunity to help kids develop emotional control and resilience in the face of stress, uncertainty, and change is provided by mindful parenting. By creating intentional family rituals, engaging in active listening, and modeling calm presence, parents can equip their children with the skills to navigate challenges with grace and confidence. Furthermore, the cultivation of empathy and self-awareness nurtures essential emotional intelligence, which in turn fosters healthy relationships, academic success, and overall well-being. The potential of mindful parenting extends far beyond a one-time strategy or quick fix. It is a dynamic and evolving practice that requires consistency, patience, and openness to change. As parents grow in their mindfulness, they not only enhance their ability to respond thoughtfully to their children but also contribute to the development of a generation that is equipped to thrive in a rapidly changing world. In conclusion, embracing mindfulness in parenting is a powerful way to raise emotionally intelligent, resilient children. It fosters an environment where children feel valued, heard, and supported. As we face the challenges of modern life, mindful parenting provides an essential foundation for cultivating the next generation of compassionate, emotionally capable individuals who are well-prepared for the complexities of today's world.

Availability of data and materials

The datasets supporting the conclusions of this study are included within the article.

Competing Interests Statement

The authors have declared that no competing interests exist.

References

- [1] Duncan, L. G., Coatsworth, J. D., & Greenberg, M. T. (2009). A model of mindful parenting: Implications for parent-child relationships and prevention research. *Clinical child and family psychology review*, 12, 255-270.
- [2] Melton, L. G. (2025). *Raising Resilient Kids in a Screen-Obsessed World: Practical Strategies to Build Confidence, Emotional Balance, and Lifelong Skills for Thriving in the Digital Age*. Lavinia Gladys Melton.
- [3] Sommers, B. K. (2017). *A Model Of Distress Tolerance In Self-Damaging Behaviors: Examining The Role Of Emotional Reactivity And Learned Helplessness*. Andrews University.
- [4] Melton, L. G. (2025). *Raising Resilient Kids in a Screen-Obsessed World: Practical Strategies to Build Confidence, Emotional Balance, and Lifelong Skills for Thriving in the Digital Age*. Lavinia Gladys Melton.
- [5] Zeidner, M., Matthews, G., Roberts, R. D., & MacCann, C. (2003). Development of emotional intelligence: Towards a multi-level investment model. *Human development*, 46(2-3), 69-96.
- [6] Duncan, L. G., Coatsworth, J. D., & Greenberg, M. T. (2009). A model of mindful parenting: Implications for parent-child relationships and prevention research. *Clinical child and family psychology review*, 12, 255-270.
- [7] Jafari, N., Zeine, F., & Manookian, E. (2022). *Intentional Parenting: A Practical Guide to Awareness Integration Theory*. Cambridge Scholars Publishing.
- [8] Boyd, S. (2025). *Turn Down the Noise: A Practical Guide to Building an Emotionally Healthy Family in a Chronically Overstimulated World*. Tyndale House Publishers.
- [9] Willis, E. (2016). An empathetic beginning in education: exploring the prospects of self-regulation skills on pro-social behavior in the early childhood environment. *Early Child Development and Care*, 186(4), 662-670.
- [10] Cousineau, T. M., Hobbs, L. M., & Arthur, K. C. (2019). The role of compassion and mindfulness in building parental resilience when caring for children with chronic conditions: A conceptual model. *Frontiers in Psychology*, 10, 1602.
- [11] Kanoy, K. (2013). *The Everything Parent's Guide to Emotional Intelligence in Children: How to Raise Children Who Are Caring, Resilient, and Emotionally Strong*. Simon and Schuster.
- [12] Suldo, S. M., Hoffman, J. A., & Mercer, S. H. (2020). Striving for Work-Life Balance, Engaging in Self-Care, and Preventing Burnout. In *Handbook of university and professional careers in school psychology* (pp. 241-258). Routledge.
- [13] Lippold, M. A., McDaniel, B. T., & Jensen, T. M. (2022). Mindful parenting and parent technology use: Examining the intersections and outlining future research directions. *Social Sciences*, 11(2), 43.
- [14] Cousineau, T. M., Hobbs, L. M., & Arthur, K. C. (2019). The role of compassion and mindfulness in building parental resilience when caring for children with chronic conditions: A conceptual model. *Frontiers in Psychology*, 10, 1602.
- [15] SANDUA, D. (2023). *Effective Parent-Child Communication*. Independently Published.
- [16] Bindu, T. V., & Saravanakumar 2nd, A. R. (2023). Life Skills Education: Enhancing Competencies for Adaptive Living. *International Journal of Innovative Science and Research Technology*, 8(8), 2300-2305

Citation:

Mindful Parenting: Raising Emotionally Resilient Children in a Rapidly Changing World (F. Babaei Pour , Trans.). (2025). *Scientific Hypotheses*, 2. <https://doi.org/10.69530/c1cdae20>